



GLOBAL G.A.P.

COMPOUND FEED MANUFACTURING STANDARD

CFM v3.1 – published 20 December 2022





CONTENTS

1. Industry challenges
2. The GLOBALG.A.P. solution
3. Development process
4. Key topics
5. Standard content
6. How it works
7. Eligibility and assessment
8. Transparency
9. Benefits
10. Costs and license fees





INDUSTRY CHALLENGES

Ensuring feed and food safety across supply chains



- Safe, suitable nutrition is vital for **animal health and welfare**. Compound feed plays a key role in **feed and food safety** across the entire supply chain.
- Particularly with respect to land conversion, the **origins and sustainability of raw materials** used to manufacture compound feed are increasingly important to consumers.
- **Traceability** in compound feed manufacturing is a major priority for both consumers and supply chain stakeholders.



INDUSTRY CHALLENGES

Responsible sourcing and production

- **Workers' health, safety, and welfare** are also increasingly in the spotlight and are essential for socially responsible production.
- **Environmental governance** is required to ensure responsible resource use in production and the responsible sourcing of critical compounds such as soy.
- **Certification of feed mills** enables livestock and aquaculture producers seeking GLOBALG.A.P. certification to comply with the requirements for feed supply.





THE GLOBALG.A.P. SOLUTION

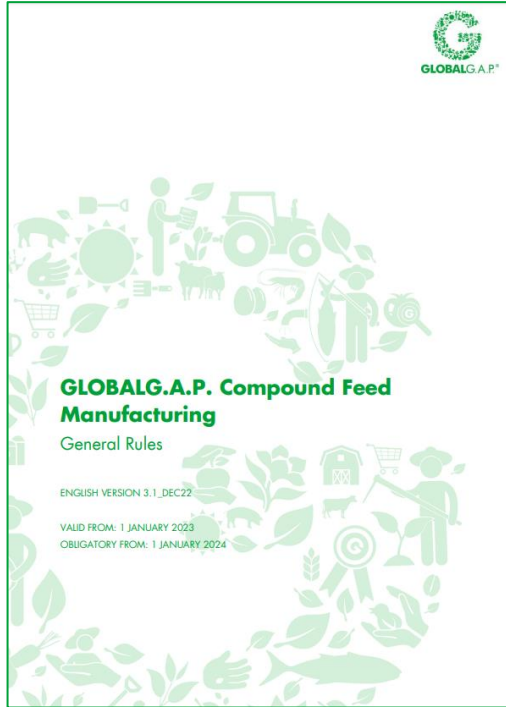
Compound Feed Manufacturing (CFM) standard

- A global feed mill standard certifying **commercial compound feed production processes**
- Applicable for compound feed destined for **food-producing animals** covered by the GLOBALG.A.P. Integrated Farm Assurance (IFA) standard for livestock and aquaculture
- Covering **all production steps**, from the purchase, handling, and storage of raw materials to the processing and distribution of finished feed
- Specifies **fixed percentages of fish meal, fish oil, and soy** that must be sourced from sustainable production
- **Tried, tested, and trusted around the world**, with GLOBALG.A.P. certified production processes producing over 23 million tons of feed each year



DEVELOPMENT PROCESS

Standard revision for version 3.1



The revision of CFM v2.2 took place from February 2020 to November 2021. V3 of the standard was launched on 15 December 2021, and subsequently underwent minor updates to v3.1, published on 20 December 2022.

The process included collaboration with the **GLOBALG.A.P. Compound Feed Manufacturing Focus Group**, as well as with a stakeholder group composed of representatives of:

- Feed mill operators
- Suppliers of feed ingredients
- Livestock producers
- Aquaculture producers



COMPOUND FEED MANUFACTURING STANDARD

Key topics

The CFM standard is based on the topics of **feed safety, sustainability, social governance, and environmental governance.**



FEED
SAFETY



TRACEABILITY



RESPONSIBLE
SOURCING



WORKERS'
QUALIFICATIONS



WORKERS' HEALTH
AND SAFETY



OPERATING
CONDITIONS



RESOURCE USE



BIOSECURITY



PROHIBITED
MATERIALS



RAW MATERIAL
MANAGEMENT



STANDARD CONTENT

Structure

The standard is divided into **four sections**. Sections A, B, and C feature **control points and compliance criteria**. D contains **guidelines**.

A Feed safety, traceability, and responsible sourcing

- A 1 Official approval of the manufacturer
- A 2 Quality management system and HACCP
- A 3 Internal audits
- A 4 Feed ingredients management
- A 5 Responsible sourcing of feed materials
- A 6 Control and storage of incoming feed ingredients
- A 7 Processing
- A 8 Finished feed transport and loading
- A 9 Site hygiene and management
- A 10 Quality control of finished feed
- A 11 Ingredients declaration/Genetically modified feed ingredients
- A 12 Specifications and environmental impact of finished feed products
- A 13 Complaints
- A 14 Documentation on traceability

B Workers' competence, health, and safety

- B 1 Risk assessment
- B 2 Training
- B 3 First aid and hazards
- B 4 Protective clothing
- B 5 Welfare

C Additional environmental and social governance

- C 1 Environmental permits
- C 2 Fair operating practices
- C 3 Manufacturing process
- C 4 Labor practices
- C 5 Local community engagement

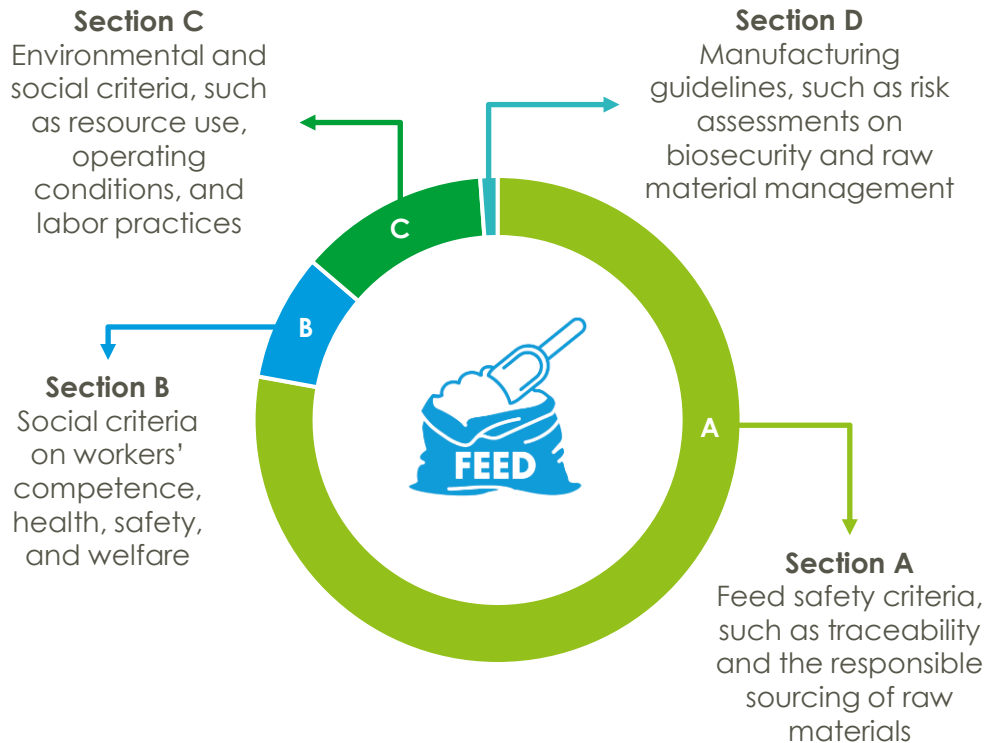
D Guidelines (reference documents to control points)

- D 1 Materials prohibited for animal nutrition
- D 2 Haulage exclusion
- D 3 Risk assessment



STANDARD CONTENT

Control points and compliance criteria (CPCCs)



Standard section	Number of CPCCs
A	209
B	22
C	33
D	3 guidelines
TOTAL	264



STANDARD CONTENT

Updates from CFM v2.2 to v3.1

- **Revised structure**, containing mandatory and voluntary sections.
- Sections A, B, and D represent the core content and are **mandatory for all manufacturers** seeking GLOBALG.A.P. certification.
- The new section C (Additional environmental and social governance) is **voluntary and can be customized**.
- Customization by a manufacturer in section C, in whole or by subsection, is indicated on the certificate as a **specific product attribute**.

C Additional environmental and social governance

- C 1 Environmental permits
- C 2 Fair operating practices
- C 3 Manufacturing process
- C 4 Labor practices
- C 5 Local community engagement



STANDARD CONTENT

New in CFM v3.1

- Raising the bar with an **increased number of CPCCs**, from 209 in v2.2 to 264 in v3.1.
- Expanded criteria in section A on the **responsible sourcing of feed materials** (22 CPCCs), particularly soy, palm oil, and fish meal/oil.
- New criteria in section C on **sustainability** (33 CPCCs), including environmental permits, fair operating practices, manufacturing processes (energy, emissions, water, waste, and effluents), and more.

A Feed safety, traceability, and responsible sourcing

A 1 Official approval of the manufacturer

A 2 Quality management system and HACCP

A 2.2, A 2.4, covering the biosecurity risk assessment of feed ingredients and finished feed

A 3 Internal audits

A 4 Feed ingredients management

A 5 Responsible sourcing of feed materials

A 5.1 General requirements

A 5.2 Responsible sourcing of agricultural feed ingredients

A 5.3 Responsible sourcing of marine feed ingredients

A 5.4 Novel feed ingredients

A 6 Control and storage of incoming feed ingredients

A 7 Processing

A 8 Finished feed transport and loading

A 9 Site hygiene and management

A 10 Quality control of finished feed

A 11 Ingredients declaration/Genetically modified feed ingredients

A 12 Specifications and environmental impact of finished feed products

A 13 Complaints

A 14 Documentation on traceability



STANDARD CONTENT

Criteria example

- **Major Must** control points require **100% compliance**.
- **Minor Must** control points require **95% compliance**.
- Section D guidelines serve as **reference documents** to various CPCCs.

No	Control Points	Compliance Criteria	Level	Yes	No	N/A	Justification
A	FEED SAFETY, TRACEABILITY AND RESPONSIBLE SOURCING						
A 1	OFFICIAL APPROVAL OF THE MANUFACTURER						
A 1 . 1	Has an official notification of recognition or registration been issued by the competent authority for the feed production sites?	An approval by the competent authority and/or registration shall be demonstrated. A registration number shall be recorded where relevant.	Major Must				
A 1 . 2	Does the site have a detailed organization chart?	There shall be an organization chart setting out the staff required to fulfill the production and quality functions and their responsibilities and job titles.	Minor Must				



HOW IT WORKS

- The CFM standard is a **stand-alone product** – no existing GLOBALG.A.P. certification is required by manufacturers.
- Grazing/Foraging materials and home-mixed feed which does not leave the farm where it has been produced are **not covered by the CFM standard**.
- Producers who prepare home-mixed feed **must follow criteria outlined in the respective IFA standard for livestock or aquaculture**.





ELIGIBILITY AND ASSESSMENT

Target group

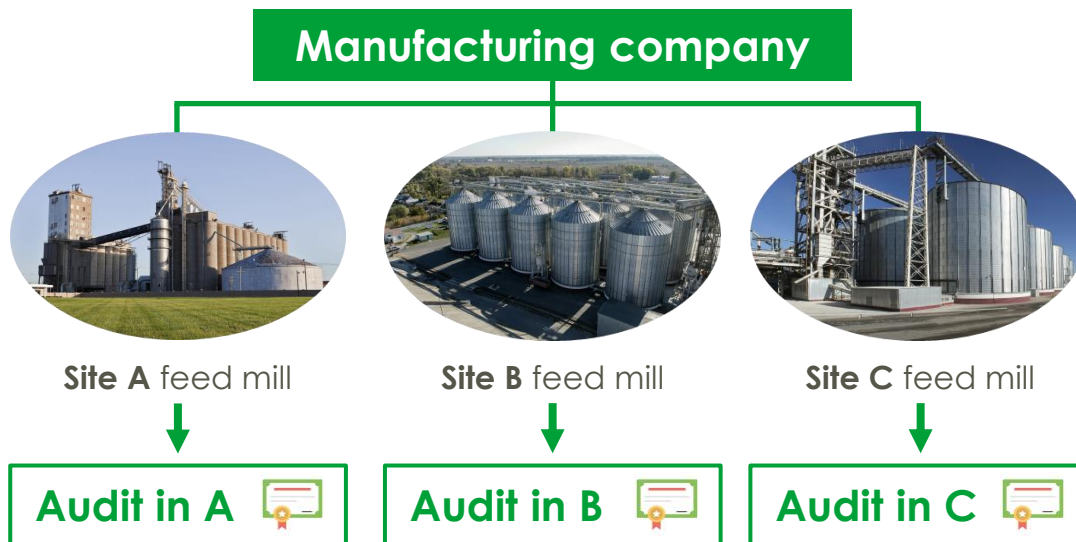
- Any operation or company that is **legally responsible for the manufacturing of compound feed** can achieve CFM certification.
- Manufacturers **seeking to supply their products to aquaculture/livestock producers with GLOBALG.A.P. certified production processes** must have CFM certification. All inputs for farms with IFA certified production processes must be sourced from manufacturing processes that have **CFM certification or a benchmarked equivalent**.
- These requirements form **Major Must criteria** for producers in IFA scopes covering food-producing animals.
- Certifications and audits to CFM v2.2 may be carried out **until 31 December 2023**. CFM v3.1 will replace v2.2 and v3 and become **obligatory from 1 January 2024**.



ELIGIBILITY AND ASSESSMENT

Certification options

CFM certification is possible under **Option 1 only**: individual certification of each manufacturing site. For multisite feed mill operators, **all manufacturing sites must be audited**.





GLOBALG.A.P. ADD-ON FOR FEED MANUFACTURERS

NON-GM/“Ohne Gentechnik”

Manufacturers have the option to extend the scope of their certification with the **voluntary NON-GM/“Ohne Gentechnik” add-on.**

- The add-on is applicable in EU member states, non-EU member states where local legislation is equivalent to **EU regulations 1829/2003 and 1830/2003**, and specific countries where the import and commercial cultivation of genetically modified organisms is not approved or prohibited by law (e.g., Norway).





GLOBALG.A.P. ADD-ON FOR FEED MANUFACTURERS

NON-GM/“Ohne GenTechnik”

- The add-on contains one set of criteria relevant for compound feed manufacturing: Module 1 consists of seven sections with one annex and **a total of 21 control points, all graded at Major Must level.**
- Manufacturers receive a **letter of conformance** on passing the audit. They are then eligible to use the seal on their product.





TRANSPARENCY

Ensuring supply chain traceability

- Certification status of compound feed manufacturers is visible in the **GLOBALG.A.P. IT systems**.
- This includes any applicable **add-ons** combined with the CFM standard.
- For GLOBALG.A.P. certified aquaculture and livestock production, the database also shows the **GLOBALG.A.P. Number (GGN)** of the operation from which producers source their compound feed.
- This enables **traceability** in the supply chain.



TRANSPARENCY

The GLOBALG.A.P. database

GGN		Company Type + +		Company name				Location				Country + +		
GLOBALG.A.P. Compound Feed Manufacturing		Producer		Producer								Germany		
Certification Body / Producer Group		Name1	Name2	Scheme	Certificate (online) Current Next	Certificate (PDF) Current Next	Other Information							
DNV		GLOBALG.A.P. Compound Feed Manufacturing		de en		de en								
CFM Compound Feed Manufacturer		CFM Compound Feed Manufacturer		GLOBALG.A.P. Compound Feed Manufacturing		de en								
Product	GLOBALG.A.P. certificate no.	Cycle	Status	Certified/assessed process	Checklist	Valid to	Scheme GR	Scheme CPOC	Option	Multisite	Countries of destination	Certificate (online)	Certificate (PDF)	Other Information
Compound Feed for Aquaculture	00098-HLHNL-002	Current	certified	Yes	+	01/07/2022	GLOBALG.A.P. CFM GR version 2.2_Aug16	CPOC Compound Feed Manufacturing v2.2_Aug16	1	no Multisite	ALB, AND, ARE, ARM, AUS, BEN, BHM, BLR, CHN, CMR, COD, CRI, CYP, DEU, DNK, DZA, ESP, EST, EU, FIN, GAB, GEO, GHA, HRV, IDN, IRN, ISR, KAZ, KGZ, KOR, LBN, LTU, LVA, MAR, MCO, MDA, MDG, MKD, MLI, MLT, MUS, MYS, NGA, NOR, REU, RKS, ROU, RUS, SAU, SEN, SGP, SRB, SUR, SWE, TGO, THA, TKM, TUN, TUR, UKR, USA, VNM, ZAF, ZMB	de en	de en	
Attributes current cycle														
Parallel Ownership (PO)? No														
Assessment conducted remotely? Yes														
GLOBALG.A.P. NON-GM/Ohne Gentechnik Add-on														
Certification Body / Producer Group		Name1	Name2	Scheme	Other Information									
DNV				GLOBALG.A.P. NON-GM/Ohne Gentechnik Add-on Module 1: Compound Feed Manufacturing Company										
Module 1 CFM feed mills														
Product	GLOBALG.A.P. certificate no.	Cycle	Status	Certified/assessed process	Checklist	Valid to	Scheme GR	Scheme CPOC	Option	Multisite	Countries of destination	Other Information		
Compound Feed for Aquaculture	00098-HLHNP-002	Current	assessed	Yes	+	01/07/2022	GLOBALG.A.P. NON-GM/Ohne Gentechnik General Rules	GLOBALG.A.P. NON-GM/Ohne Gentechnik Add-on Module 1: Compound Feed Manufacturing Company	1	no Multisite	ALB, AND, ARE, ARM, AUS, AUT, BEL, BEN, BHM, BLR, CHE, CMR, COD, CYP, CZE, DEU, DNK, ESP, EST, ETH, FIN, FRA, GAB, GBR, GEO, GHA, GRC, HUN, IDN, IRL, IRQ, ISR, ITA, KAZ, KGZ, KOR, LBN, LKA, LTU, MAR, MDA, MDG, MEX, MKD, MLI, MLT, MUS, NGA, NLD, PAN, POL, PRT, ROU, ROU, RUS, SEN, SRB, SUR, SVI, SWE, THA, TKM, TUR, UZB, VNM, ZAF			

Product and scope

Status and validity

Countries of destination

Certification/Assessment status of applicable add-ons



BENEFITS



- **Mitigates feed safety and reputational risks** and protects product integrity throughout the entire manufacturing process
- **Ensures the responsible sourcing** of raw materials and critical compounds used for feed ingredients
- **Supports the optimization of production processes and feed mill management**, from workers' welfare and quality control to storage and transport
- **Fulfills the requirements** of international supply chains



BENEFITS

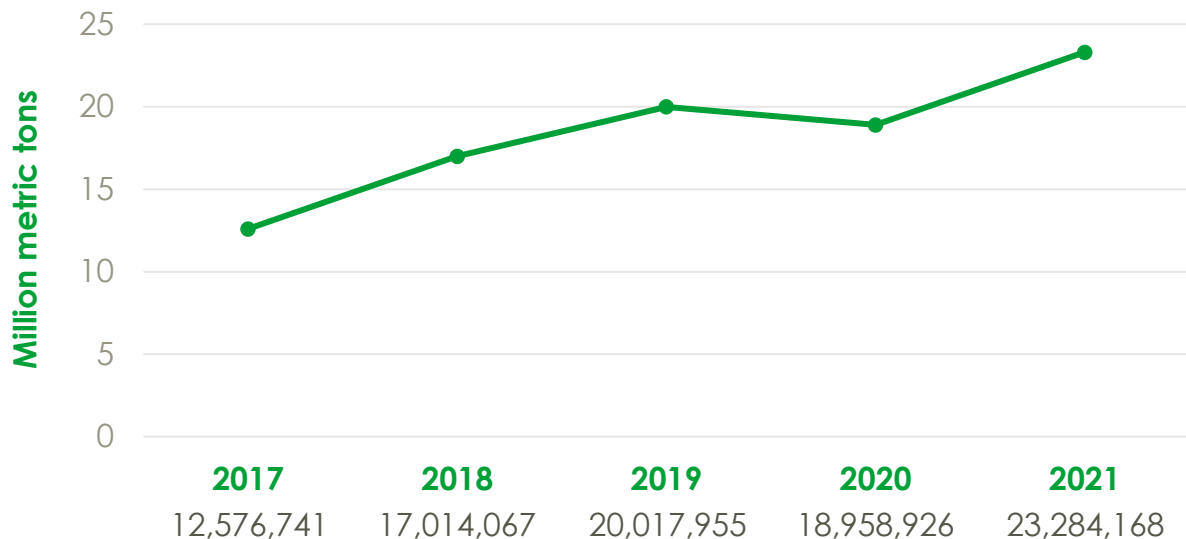
- **Demonstrates your commitment** to sustainability, transparency, social responsibility, and animal health
- **Opens the door to the GLOBALG.A.P. system** by connecting you to producers with our industry-leading IFA certification
- **Available globally** via an extensive network of GLOBALG.A.P. approved certification bodies (CBs)
- **Opportunity to contribute to a stakeholder-driven solution** through GLOBALG.A.P. focus groups and technical committees





FACTS AND FIGURES

Production processes with CFM certification operate in **over 30 countries** and together produce **more than 23 million metric tons** of compound feed for the global market annually.





COSTS AND LICENSE FEES

The CFM standard contains **three cost elements**. Total costs depend on a combination of factors, including the size of the operation, number of manufacturing sites, location, existing policies and processes, etc.

1. **Implementation costs:** incurred by the company to prepare for the audit
2. **CB service fees:** determined by the CB to cover expenditures
3. **Registration and certificate license fees:** see table on next slide

The minimum audit duration
for the first manufacturing site
is **2 days**

The minimum audit duration
for each additional site
is **0.75 days**

This includes the on-site audit
and audit reporting, but
excludes CB travel time



COSTS AND LICENSE FEES

The CFM standard is available for **Option 1 only** (individual certification).

Registration fee

Quantity of compound feed produced annually (tons)	Annual fee (€)
< 1000	50.00
≥ 1000 – < 2,500	75.00
≥ 2,500 – < 5,000	100.00
≥ 5,000 – < 10,000	150.00
≥ 10,000 – < 25,000	300.00
≥ 25,000 – < 50,000	500.00
≥ 50,000 – < 100,000	1,000.00
≥ 100,000 – < 200,000	1,500.00
≥ 200,000	2,000.00

Certificate license fee

Applies to:	Annual fee (€)
Each certified company	25.00



FIVE STEPS TO CERTIFICATION

- 1 Download the documents from the GLOBALG.A.P. website.**
CFM general rules, CFM v3.1 control points and compliance criteria
- 2 Implement the standard requirements and perform the self-assessment.**
GLOBALG.A.P. Registered Trainers can provide assistance during audit preparations.
- 3 Contact a GLOBALG.A.P. approved CB and request an audit.**
Search the full list of approved CBs by region, country, scope, and status on our website.
- 4 CB performs on-site audit and uploads results to the GLOBALG.A.P. IT systems.**
All non-compliances must be closed within 28 days and verified by the CB.
- 5 Receive a GLOBALG.A.P. certificate for the CFM standard.**
The certification status is visible in the GLOBALG.A.P. IT systems.



REGISTERED TRAINERS

Registered Trainers are:

- Farming experts
- Trained by GLOBALG.A.P.
- Authorized to provide trainings on GLOBALG.A.P. standards and add-ons
- Able to support you on your journey to achieving GLOBALG.A.P. certification



Find Registered Trainers using our “[Find a Registered Trainer](#)” tool.
You can recognize them by their green seal.